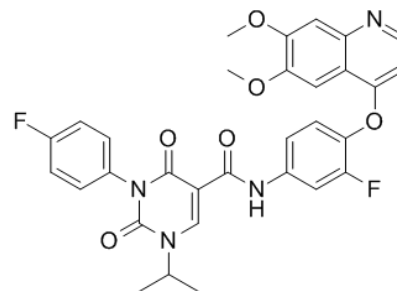


Product Name : CEP-40783
Cat. No. : PC-42292
CAS No. : 1437321-24-8
Molecular Formula : C₃₁H₂₆F₂N₄O₆
Molecular Weight : 588.5581464
Target : TAM Receptor (Tyro3-Axl-Mer)
Solubility : DMSO: 7.6 mg/mL

1. Kim JE, et al. *Oncotarget*. 2017 Nov 11;8(62):105727-105734.
2. Yokoyama Y, et al. *Cancer Res*. 2019 Feb 5. pii: canres.2022.2018. doi: 10.1158/0008-5472.CAN-18-2022.



Biological Activity

CEP-40783 (CEP40783, RXDX-106) is a potent and selective **AXL/c-Met** inhibitor with IC₅₀ of 7 nM/12 nM. CEP-40783 displays kinome selectivity against 298 kinases. CEP-40783 is 27-fold more active compared to recombinant enzyme with IC₅₀ of 0.26 nM in AXL transfected 293GT cells. CEP-40783 shows superior activity against c-Met in GTL-16 cells (IC₅₀=6 nM); orally active in cancer models.

References

